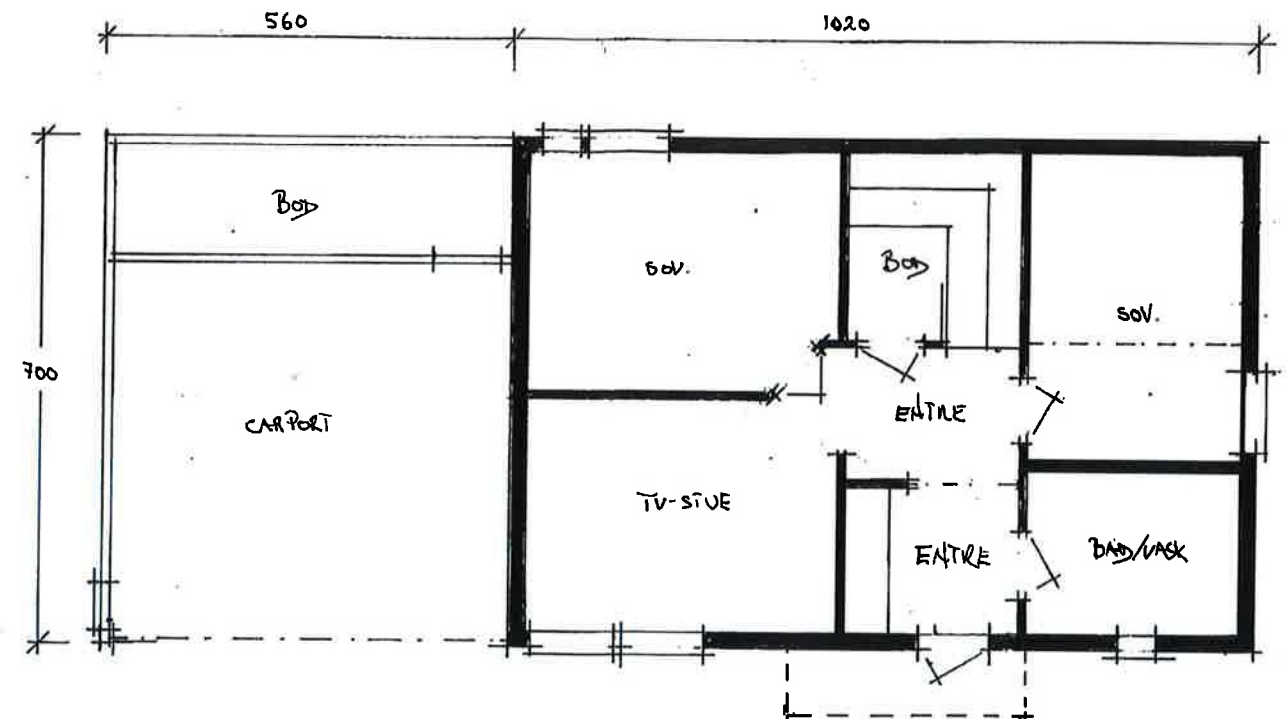
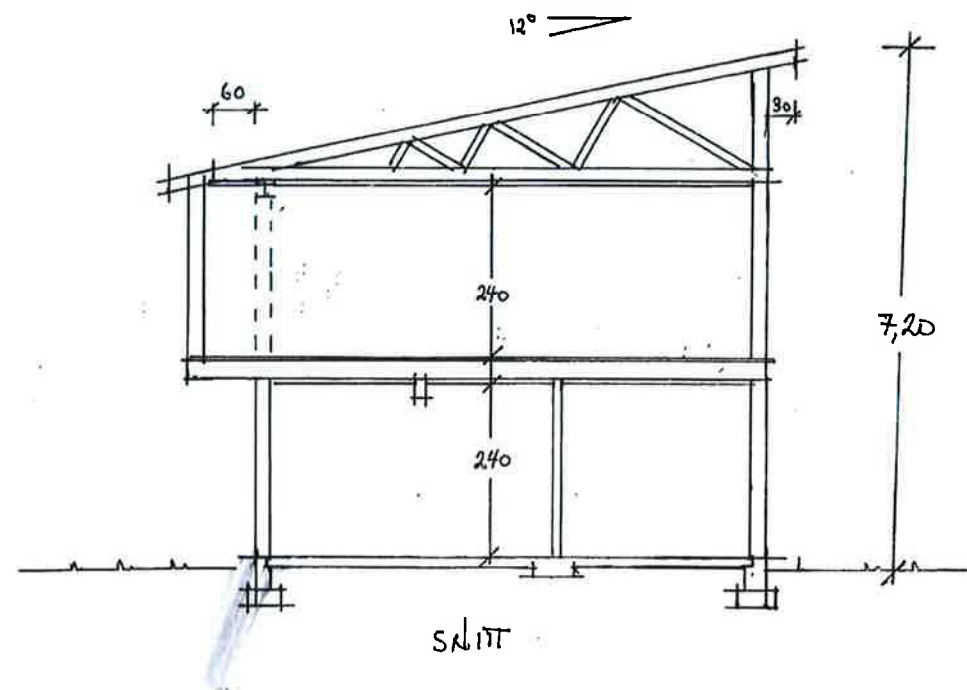


PLAN 2. ETG.



PLAN 1. ETG.



BYGGHERRE: Viktoria-Hus AS	MÅL: 1:100
BYGGSTED: Østre Lensmannsveg 9 B, Skien	BYA: 110,6 kvm BRA: 168,0 kvm
PLAN OG SNITT	
ARK.: T. SIMONSEN	